



Redesigning plastics. For good.

Biobased polymers
for durable use

Plantura

Your partner for the transition

Technical polymers are widely used for engineered parts used inside various application inside automobiles, electrical appliances, electronic devices or other consumers products. Such materials are designed to meet specific performances to manage a durable use inside various environments.

Used alone or in combination with a specific fillers, their thermomechanical behavior associated with specific performance such as fire resistance, shock resistance, wide servicing temperature range, dielectric properties, many polymers families are widely used such as ABS, PC, PA, PBT...

The current motion to global resources saving leads to add to integrate environmental performance parameters on top of design to cost constrains. As game changer, this leads to develop new material generation to meet such new challenges: be able to integrate a clear bio sourced materials instead of usual fossil based polymers is what BENVIC provides as transitioning solutions for various segments.

Aside product with short life span such as packaging, our bio based PLANTURA product line is addressing usages covered by fossil based techno polymers for durable usages. On top of our existing standard grades, our engineered are developing new compounds to manage an efficient substitution from fossil based materials with the highest level of performance and process ability.

Thanks to our compounding know how and set of solutions, BENVIC is able to sustain customers in the choice and optimization of such new materials. On top of the resin, solutions based on additives or fillers, especially natural one to increase the bio based content.

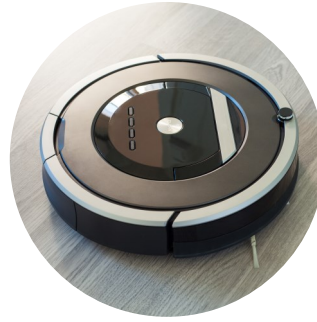
Our products cover a wide range of applications :

Automotive with interior, under bonnet and exterior parts and components, especially adapted for changes implied by E-mobility and



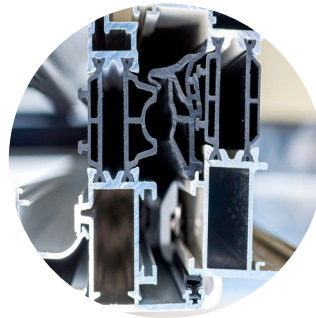
Furniture, toys and fashion parts & accessories based on appearance possibilities including natural fillers for natural aspects.

Electrical appliances, electronic & IoT devices casings, mechanical and electrical components



Medical monitoring, medical components & healthcare wearables mechanical components

Building components for structural parts and mechanisms



Bio based content With 80% minimum bio based content, the PLANTURA polymer range is the one to meet new expectations regarding non renewable and greenhouse gas emissions savings to optimize final product life cycle assessment.

Appearance Based on natural compounds, a wide variety of appearance based on colors and brightness's are possible upon demand.

Thermomechanical performance By providing similar properties than the techno polymers, the durable PLANTURA range is able to cover wide range of usages similar to the most used techno polymers

Natural fillers To improve the bio based content, different natural fillers can be proposed. They contribute as well to generate codes to final consumer regarding the high bio based content


Specific features fire resistance, reinforcement fiber addition, resistance against hydrolysis can be integrated depending final application requirements. Our PLANTURA range is versatile and easy to get improve for specific uses.

When sustainability meets performance

Key benefits

 **Color on demand** existing color range

 **Bio based** content above 80%




 **Brightness** different aspects from matt to gloss

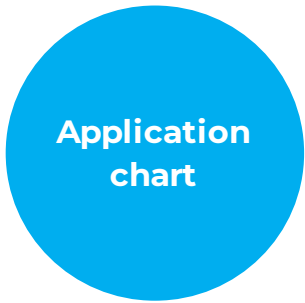
 **Natural filler** compatible

 **Fire resistance** on demand

Plantura

Durable bio polymers range

	Process	Main features	Benefits	Substitute	Country of origin	Presentation
E67C1WE	Extrusion				IT	Pellets
67C1WR	Injection 3D print			ABS	IT	Pellets
67CFL1WR	Injection	High temperature			IT	Pellets
70FV	Injection	Glass fiber reinforced			IT	Pellets
80VT	Injection				IT	Pellets



	<i>Automotive</i>	<i>Consumer</i>	<i>E/E appliances</i>	<i>Medical components</i>	<i>Building components</i>
E67CIWE					
67CIWR	○	○	○	○	
67CFL1WR	○	○	○	○	
70FV	○	○	○		
80VT	○	○	○		



Benvic as specialist of PVC compounding supports customers in the product design and associated manufacturing process. For any support, please contact you closest BENVIC sales representative or at benvic.com.

Technical data sheets, processing recommendations and other supporting data are available upon demand. The information given here above is general commercial information, cannot be considered as a specification and can change without prior notice. Benvic also supports customers through continuous adaptation of its products: please contact your nearest sales representative for technical support.



Redesigning plastics. For good.



www.benvic.com



BENVIC IS POWERED
BY GREEN ENERGY